

# 50.6 MEGAPIXELS

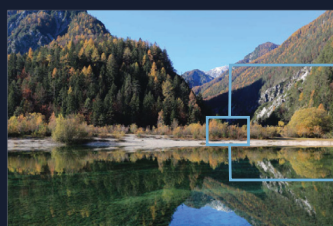
and each of them  
LEGENDARY



## EOS 5Ds R | EOS 5Ds

You know the EOS 5D series for its legendary full-frame capabilities, resolute performance and superb image quality. And though it may seem impossible, we improved on perfection. We created a different kind of perfect. The new EOS 5Ds and EOS 5Ds R have more than twice the resolving power at 50.6 megapixels. So now you experience unbelievable detail at an unprecedented resolution.

### ULTRA-HIGH 50.6-MEGAPIXEL FULL-FRAME CMOS SENSOR

**50.6M**

EOS 5Ds

**22.3M**

EOS 5D Mark III

For photographers who go large on the minutest details, the EOS 5Ds or EOS 5Ds R is made for you. Ultra-high resolution gives you images that you can work with, images that can take a dramatic crop, and images that look even more life-like when printed in large-scale.

### MAX RESOLUTION WITH LOW-PASS FILTER CANCELLATION\*

An optical low-pass filter is perfect for resolving colour artifacts and moiré appearance but diminishes extreme details. So for you, the landscape or commercial photographer, the EOS 5Ds R is designed to cancel the effect of a low-pass filter and give you the full advantage of the original 50.6 million effective pixels.

\*Only available on the EOS 5Ds R

### FINE DETAIL MODE

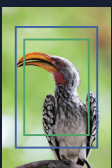
New to the standard Picture Style function, Fine Detail mode with its high degree of sharpness truly realizes the resolving power on the EOS 5Ds and EOS 5Ds R. Details are rendered with a more refined edge, lines appear more subtly, and a high image quality is retained even when expanded.





## CROP SHOOTING

With twice as many pixels within a full-frame sensor, you can now perform crop shooting of 1.3x for approximately 30.5 megapixels or 1.6x for approximately 19.6 megapixels. This is especially useful if you haven't got an extender on hand or you are going for a telescopic effect in bird or sports photography.



x 1.3



x 1.6



Pseudo telescopic effect equivalent to that of EOS-1D Mark IV

Pseudo telescopic effect equivalent to that of EOS 7D Mark II



## TIME LAPSE MOVIE

Twinkling city lights, traffic streams, flower cycles, life in progress – some of the most evocative scenes are best depicted through a passage of time. Introducing the Time Lapse Movie function. It's where a series of still images are captured over a long interval and condensed into a seamless HD movie.



## 5FPS HIGH-SPEED CONTINUOUS SHOOTING

The new EOS 5DS and EOS 5DS R don't just stop at an ultra-high pixel count. With dual DIGIC 6 image processors and an incredibly high-speed readout, the cameras can fire off a rapid 5 frames per second in continuous shooting despite heavy image data from all those pixels.

### AWBw AWB: WHITE PRIORITY

We know you shoot just about anywhere and chances are you take plenty of pictures indoors where the lighting is generally warm-toned. The new Auto White Balance: White Priority reduces most of the warm tones and preserves whites for a more natural look.



Without White Priority



With White Priority

## SPECIFICATIONS

<b>TYPE</b>	Digital, single-lens reflex, AF / AE camera
Type:	CF cards (Type I, UDMA 7 supported)
Recording media:	SD / SDHC / SDXC memory cards
Image sensor size:	* UHS-I cards compatible.
Compatible lenses:	Approx. 36.0 x 24.0 mm
	Canon EF lenses
	* Excluding EF-S and EF-M lenses
	(35mm-equivalent lens focal length is as indicated on the lens)
	Canon EF mount
<b>LENS MOUNT</b>	
Type:	CMOS sensor
Effective pixels:	Approx. 50.6 megapixels. * Rounded off to the nearest 10,000th.
Aspect ratio:	3:2
Dust delete feature:	Auto / Manual, Appending Delete Delete Data
<b>RECORDING SYSTEM</b>	
Recording format:	Design rule for Camera File System (DCF) 2.0
Image type:	JPEG, RAW (14-bit Canon original), RAW+JPEG simultaneous recording possible
Pixels recorded (with full-frame):	L (Large) : Approx. 50.3 megapixels (8688 x 5792)
	M1 (Medium 1) : Approx. 39.3 megapixels (7680 x 5120)
	M2 (Medium 2) : Approx. 22.1 megapixels (5760 x 3840)
	S1 (Small 1) : Approx. 12.4 megapixels (4320 x 2880)
	S2 (Small 2) : Approx. 2.5 megapixels (1920 x 1280)
	S3 (Small 3) : Approx. 0.35 megapixels (720 x 480)
	RAW : Approx. 50.3 megapixels (8688 x 5792)
	M-RAW : Approx. 28.0 megapixels (6480 x 4320)
	S-RAW : Approx. 12.4 megapixels (4320 x 2880)
Crop / aspect ratio:	Crop shooting and shooting with the set aspect ratio possible.
	Full-frame / Approx. 1.3x (crop) / Approx. 1.6x (crop) / 1:1 (aspect ratio) / 4:3 (aspect ratio) / 16:9 (aspect ratio)
Recording function:	Standard, Auto switch card, Record separately, Record to multiple
Create/select a folder:	Possible
File name:	Preset code / User setting 1 / User setting 2
File numbering:	Continuous, Auto reset, Manual reset
<b>IMAGE PROCESSING DURING SHOOTING</b>	
Picture Style:	Auto, Standard, Portrait, Landscape, Fine Detail, Neutral, Faithful, Monochrome, User Defined 1 - 3
White balance:	Auto (White balance priority), Auto (White priority), Preset (Daylight, Shade, Cloudy, Tungsten light, White fluorescent light, Flash), Custom, Color temperature setting (approx. 2500-10000 K), White balance correction, and White balance bracketing provided
	* Flash color temperature information transmission possible
Noise reduction:	Applicable to long exposures and high ISO speed shots
Auto image brightness correction:	Auto Lighting Optimizer provided
Highlight tone priority:	Provided
Lens aberration correction:	Peripheral illumination correction, Chromatic aberration correction
<b>VIEWFINDER</b>	
Type:	Eye-level pentaprism
Coverage:	Vertical / Horizontal approx. 100% (with Eye point approx. 21 mm, full-frame)
Magnification:	Approx. 0.71 x (1 m <sup>-1</sup> with 50 mm lens at infinity)
Eye point:	Approx. 21 mm (from eyepiece lens center at 1 m <sup>-1</sup> )
Built-in diopter adjustment:	Approx. -3.0 - +1.0 m <sup>-1</sup> (dpt)
Focusing screen:	Fixed
Grid display:	Provided
Electronic level:	Provided
Function setting display:	Battery, White balance, Drive mode, AF operation, Metering mode, Image quality: JPEG/RAW, Flicker detection, Warning symbol
Mirror:	Quick-return type
Depth-of-field preview:	Provided
<b>AUTOFOCUS</b>	
Type:	TTL (secondary image-registration, phase-difference detection with the dedicated AF sensor)
AF points:	61 (Cross-type AF point: Max. 41 points)
	* Number of available AF points, cross-type points, and Dual cross-type points vary depending on the lens.
	* Dual cross-type focusing at f/2.8 with 5 AF points vertically aligned at the center. (AF group: When Group A lenses are used)
Focusing brightness range:	EV 0 - 18 (Conditions: f/2.8-sensitive center AF point, One-Shot AF, room temperature, ISO 100)
Focus operation:	One-Shot AF, AI Servo AF, AI Focus AF, Manual focusing (MF)
AF area selection mode:	Single-point Spot AF (manual selection), Single-point AF (manual selection), AF point expansion (manual selection: up, down, left, and right), AF point expansion (manual selection: surround), Zone AF (manual selection of zone), 61-point automatic selection AF
AF point automatic selection:	Based on EOS iTR AF setting
AF point automatic selection conditions:	(Enables AF incorporating human face / color information)
	* iTR: Intelligent Tracking and Recognition
AI Configuration Tool:	Case 1 - 6
AI Servo AF characteristics:	Tracking sensitivity, Acceleration / deceleration tracking, AF point auto switching
AF fine adjustment:	AF Microadjustment (All lenses by the same amount, Adjust by lens)
AF-assist beam:	Emitted by the EOS-dedicated external Speedlite
<b>EXPOSURE CONTROL</b>	
Metering modes:	Approx. 150,000-pixel RGB+IR metering sensor and 252-zone TTL metering at max. aperture
	EOS iSA (Intelligent Subject Analysis) system
	* Evaluative metering (linked to all AF points)
	* Partial metering (approx. 6.1% of viewfinder at center)
	* Spot metering (approx. 1.3% of viewfinder at center)
	* Center-weighted average metering
Brightness metering range:	EV 0 - 20 (at room temperature, ISO 100)
Exposure control:	Program AE (Scene Intelligent Auto, Program), Shutter-priority AE, Aperture-priority AE, Manual exposure, Bulb exposure
ISO speed:	Scene Intelligent Auto: ISO 100 - ISO 3200 set automatically
(Recommended exposure index)	P, Tv, Av, M, B: Auto ISO, ISO 100 - ISO 6400 (in 1/3- or whole-stop increments), or ISO expansion to L (equivalent to ISO 50) or H (equivalent to ISO 12800)
ISO speed settings:	ISO speed range, Auto ISO range, and Auto ISO minimum shutter speed selectable
Exposure compensation:	Manual: ±5 stops in 1/3- or 1/2-stop increments
	AE: ±3 stops in 1/3- or 1/2-stop increments (can be combined with manual exposure compensation)
AE lock:	Auto: Applied in One-Shot AF mode with evaluative metering when focus is achieved
	Manual: By AE lock button
Anti-flicker:	Possible
Interval timer:	Shooting interval and shot count settable
Bulb timer:	Bulb exposure time settable
<b>HDR SHOOTING</b>	
Dynamic range adjustment:	Auto, ±1, ±2, ±3
Effects:	Natural, Art standard, Art vivid, Art bold, Art embossed
Auto image align:	Provided

<b>MULTIPLE EXPOSURES</b>	Function / control priority, Continuous shooting priority
Shooting method:	No. of multiple exposures: 2 to 9 exposures
Multiple exposure control:	Additive, Average, Bright, Dark
<b>SHUTTER</b>	
Type:	Electronically-controlled, focal-plane shutter
Shutter speeds:	1/8000 sec. to 30 sec. (total shutter speed range; available range varies by shooting mode), Bulb, X-sync at 1/200 sec.
<b>DRIVE SYSTEM</b>	
Drive modes:	Single shooting, High-speed continuous shooting, Low-speed continuous shooting, Silent single shooting, Silent continuous shooting, 10-sec. self-timer / remote control, 2-sec. self-timer / remote control
Continuous shooting speed:	High-speed continuous shooting: Max. approx. 5.0 shots/sec.
	Low-speed continuous shooting: Max. approx. 3.0 shots/sec.
	Silent continuous shooting: Max. approx. 3.0 shots/sec.
Max. burst:	JPEG Large/Fine: Approx. 31 shots (approx. 510 shots)
	RAW: Approx. 12 shots (approx. 14 shots)
	RAW+JPEG Large/Fine: Approx. 12 shots (approx. 12 shots)
	* Figures are based on Canon's testing standards (ISO 100 and Standard Picture Style) and an 8 GB CF card.
	* Figures in parentheses apply to an UDMA mode 7, with a CF card based on Canon's testing standards.
<b>EXTERNAL SPEEDLITE</b>	
Compatible Speedlites:	EX-series Speedlites
Flash metering:	E-TTL II autofocus
Flash exposure compensation:	±3 stops in 1/3- or 1/2-stop increments
FE lock:	Provided
PC terminal:	Provided
Flash control:	Flash function settings, Flash C.Fn settings
<b>LIVE VIEW SHOOTING</b>	
Focus methods:	Contrast-detection AF system (Face+Tracking, FlexiZone-Single)
	Manual focus (approx. 6x and 16x magnified view possible for focus check)
Continuous AF:	Provided
Focusing brightness range:	EV 0 - 18 (at room temperature, ISO 100)
Metering modes:	Evaluative metering (315 zones), Partial metering (approx. 6.4% of Live View screen), Spot metering (approx. 2.8% of Live View screen), Center-weighted average metering
Brightness Metering range:	EV 0 - 20 (at room temperature, ISO 100)
Silent shooting:	Provided (Mode 1 and 2)
Grid display:	3 types
<b>MOVIE SHOOTING</b>	
Recording format:	MOV
	Movie: MPEG-4 AVC / H.264
	Variable (average) bit rate
	Audio: Linear PCM
Recording size and frame rate:	Full HD (1920x1080): 29.97p / 25.00p / 23.98p
	HD (1280x720): 59.94p / 50.00p
	VGA (640x480): 29.97p / 25.00p
Compression method:	ALL-I (For editing / i-Only), IPB (Standard)
File size:	Full HD (29.97p / 25.00p / 23.98p) / ALL-I: Approx. 654 MB/min.
	Full HD (29.97p / 25.00p / 23.98p) / IPB (Standard): Approx. 225 MB/min.
	HD (59.94p / 50.00p) / ALL-I: Approx. 583 MB/min.
	HD (59.94p / 50.00p) / IPB (Standard): Approx. 196 MB/min.
	VGA (29.97p / 25.00p) / IPB (Standard): Approx. 78 MB/min.
Card requirements	(CF card) ALL-I: 30 MB/sec. or faster, IPB: 10 MB/sec. or faster
(Writing/reading speed):	(SD card) ALL-I: 20 MB/sec. or faster, IPB: 6 MB/sec. or faster
Focus method:	Contrast-detection AF system (Face+Tracking, FlexiZone-Single)
	Manual focus (approx. 6x and 16x magnified view possible for focus check)
Movie servo AF:	Possible
Focusing brightness range:	EV 0 - 18 (at room temperature, ISO 100)
Metering modes:	Center-weighted average metering and Evaluative metering with the image sensor
	* Automatically set by the focusing mode
Brightness metering range:	EV 0 - 20 (at room temperature, ISO 100)
Exposure control:	Auto exposure shooting (Program AE for movie shooting), Shutter-priority AE, Aperture-priority AE, Manual exposure
Exposure compensation:	±3 stops in 1/3-stop or 1/2-stop increments
ISO speed:	Scene Intelligent Auto, 1x: Automatically set within ISO 100 - ISO 6400
	P, Av, B: Automatically set within ISO 100 - ISO 6400, expandable to H (equivalent to ISO 12800), M: Auto ISO (automatically set within ISO 100 - ISO 6400), ISO 100 - ISO 6400 set manually (in 1/3- or whole-stop increments), expandable to L (equivalent to ISO 12800)
	Supported
Time code:	Compatible with 59.94p / 29.97p
Drop frames:	Built-in monaural microphone, external stereo microphone terminal provided
Sound recording:	Sound-recording level adjustable, wind filter provided, attenuator provided
Grid display:	3 types
Time-lapse movie:	Shooting interval and number of shots settable
	Required shooting time period, playback length, and remaining card capacity viewable
Still photo shooting:	Possible
<b>LCD MONITOR</b>	
Type:	TFT color, liquid-crystal monitor
Monitor size and dots:	Wide 8.1 cm (3.2-in) (3.2) with approx. 1.04 million dots
Brightness adjustment:	Auto (Dark, Standard, Bright), Manual (7 levels)
Electronic level:	Provided
Interface languages:	25
Help display:	Possible
<b>PLAYBACK</b>	
Image display formats:	Single-image display (without shooting information), Single-image display (with simple information), Single-image display (Shooting information displayed: Detailed information, Lens info, histogram, White balance, Picture Style 1, Picture Style 2, Color space / noise reduction, Lens aberration correction), Index display (4 / 9 / 36 / 100 images), Two-image display
	Overexposed highlights blink
Highlight alert:	Provided
AF point display:	3 types
Grid display:	Approx. 1.5x-16x, initial magnification and position settable
Magnified view:	Single image, Jump by 10 or 100 images, By shooting date, By folder, By movies, By stills, By protected images, By rating
Image rotation:	Provided
Rating:	Provided
Movie playback:	Enabled (LCD monitor, HDMI), Built-in speaker
Slide show:	All images, by date, by folder, by movies, by stills, by protected images, by rating
Image protection:	Possible
Copying images:	Possible

<b>POST-PROCESSING OF IMAGES</b>	
In-camera RAW image processing:	Brightness correction, White balance, Picture Style, Auto Lighting Optimizer, High ISO speed noise reduction, JPEG image-recording quality, Color space, Peripheral illumination correction, Distortion correction, Chromatic aberration correction
Resize:	Provided
Cropping:	Provided
<b>DIRECT PRINTING</b>	
Compatible printers:	PictBridge-compatible printers
Printable images:	JPEG and RAW images
Print ordering:	DPOF Version 1.1 compliant
<b>IMAGE TRANSFER</b>	
Transferable files:	Still photos (JPEG, RAW, RAW+JPEG images), Movies
<b>CUSTOM FUNCTIONS</b>	
Custom Functions:	16
Custom Quick Control:	Provided
My Menu:	Up to 5 screens can be registered
Custom shooting mode:	Register under Mode Dial's C1, C2, or C3
Copyright information:	Text entry and inclusion enabled
<b>INTERFACE</b>	
DIGITAL terminal:	SuperSpeed USB (USB 3.0)
	Computer communication, direct printing, Wireless File Transmitter WFT-E7 (Ver. 2), GPS Receiver GP-E2, Connect Station CS1000 connection
HDMI mini OUT terminal:	Type C (Auto switching of resolution), CEC-compatible
External microphone:	In terminal:
Remote control terminal:	3.5 mm diameter stereo mini-jack
Wireless remote control:	For N3-type remote control units
Eye-Fi card:	Compatible with Remote Controller RC-6 Supported
<b>POWER</b>	
Battery:	Battery Pack LP-E6N / LP-E6, quantity 1
	* AC power can be supplied via AC Adapter Kit ACK-E6.
	* With Battery Grip BG-E11 attached, AA / R6 batteries can be used.
Battery information:	Remaining capacity, Shutter count, Recharge performance, and Battery registration possible
No. of possible shots:	With viewfinder shooting: Approx. 700 shots at 23°C/73°F, approx. 660 shots at 0°C/32°F
	With Live View shooting: Approx. 220 shots at 23°C/73°F, approx. 210 shots at 0°C/32°F
	* With a fully-charged Battery Pack LP-E6N, Total approx. 1 hr. 30 min. at 23°C/73°F
	Total approx. 1 hr. 25 min. at 0°C/32°F
	* With a fully-charged Battery Pack LP-E6N.
Movie shooting time:	
<b>DIMENSION AND WEIGHT</b>	
Dimensions (W x H x D):	Approx. 152.0 x 116.4 x 76.4 mm / 5.98 x 4.58 x 3.01 in.
Weight:	Approx. 930 g / 32.80 oz. (Based on CIPA Guidelines)
	Approx. 845 g / 29.80 oz. (Body only)
<b>OPERATION ENVIRONMENT</b>	
Working temperature range:	0°C - 40°C / 32°F - 104°F
Working humidity:	85% or less
<b>BATTERY PACK LP-E6N</b>	
Type:	Rechargeable lithium-ion battery
Rated voltage:	7.2 V DC
Battery capacity:	1865 mAh
Working temperature range:	0°C - 40°C / 32°F - 104°F
Working humidity:	85% or less
Dimensions (W x H x D):	Approx. 38.4 x 21.0 x 56.8 mm / 1.51 x 0.83 x 2.24 in.
Weight:	Approx. 80 g / 2.82 oz. (excluding protective cover)
<b>BATTERY CHARGER LC-E6</b>	
Compatible battery:	Battery Pack LP-E6N / LP-E6
Recharging time:	Approx. 2 hr. 30 min.
Rated input:	100 - 240 V AC (50/60 Hz)
Rated output:	8.4 V DC / 1.2 A
Working temperature range:	5°C - 40°C / 41°F - 104°F
Working humidity:	85% or less
Dimensions (W x H x D):	Approx. 69.0 x 33.0 x 93.0 mm / 2.7 x 1.3 x 3.7 in.
Weight:	Approx. 130 g / 4.6 oz.
<b>BATTERY CHARGER LC-E6</b>	
Compatible battery:	Battery Pack LP-E6N / LP-E6
Power cord length:	Approx. 1 m / 3.3 ft.
Recharging time:	Approx. 2 hr. 30 min.
Rated input:	100 - 240 V AC (50/60 Hz)
Rated output:	8.4 V DC / 1.2 A
Working temperature range:	5°C - 40°C / 41°F - 104°F
Working humidity:	85% or less
Dimensions (W x H x D):	Approx. 69.0 x 33.0 x 93.0 mm / 2.7 x 1.3 x 3.7 in.
Weight:	Approx. 125 g / 4.4 oz. (excluding power cord)
• All the specifications listed above are common between EOS 5DS and EOS 5DS R.	
• All the data above is based on Canon's testing standards and CIPA (Camera & Imaging Products Association) testing standards and guidelines.	
• Dimensions length and weight listed above are based on CIPA Guidelines (except weight for camera body only).	
• Product specifications and the exterior are subject to change without notice.	
• If a problem occurs with a non-Canon lens attached to the camera, consult the respective lens manufacturer.	

### LOCALIZED MANUAL Available

- \* Specifications are subject to change without notice. Images are simulated.
- \* Localized manual available for Malaysia, Thailand, Vietnam and Indonesia only.

Insist on an original warranty issued by your local Canon sales office.

**SOUTH & SOUTHEAST ASIA REGIONAL HEADQUARTERS**  
**CANON SINGAPORE PTE. LTD.**  
1 HarbourFront Avenue, #04-01 Keppel Bay Tower, Singapore 098632  
[www.canon-asia.com](http://www.canon-asia.com)

Errors and omissions excepted. Images are simulated. Weight and dimensions are approximate. Subject to change without notice. Macintosh is a trademark of Apple Computer Inc., registered in the United States and other countries. Microsoft® and Windows® are either registered trademarks or trademarks of Microsoft Corporation in the United States and/or other countries. Wi-Fi is a trademark. Other names and products not mentioned above may be registered trademarks or trademarks of their respective companies. Canon is a registered trademark of Canon Inc.

Warning: Unauthorized recording of copyrighted materials may infringe on the rights of copyright owners and be contrary to copyright laws.



Canon Imaging Asia



Canon Asia

**SNAPSHOT**  
[canon-asia.com/snapshot](http://canon-asia.com/snapshot)

0192W952